

# VIVA

## PLAYING WITH YOUR PERCEPTION



# HOUTIQUE®









HOUTIQUE

## HOUTIQUE.

HOUTIQUE presents VIVA.  
Subtlety and rotundity in a bench  
that plays with your perception.

Discover HOUTIQUE's experimental  
atelier, a space where creativity and  
craftsmanship come together thanks  
to constant curiosity.







**VIVA**  
**BY CAROLINA MICÓ**

Through this creative space projected by our artistic director, Carolina Micó, we present the delicious VIVA bench.

A bench that plays with your perception, whose hard and rigid shapes contrast with its soft and comfortable seat.

A mix of craftsmanship and fantasy, inspired by the solidity of classical architecture and the geometric shapes with sharp edges characteristic of stone and urban furniture. Solidity and robustness concepts that are transferred to the indoor furniture with an adaptation in a trompe l'oeil style, becoming a surprisingly tender object.

VIVA dresses up with velvets from TELA FABRICS, the HOUTIQUE's textile brand which offers a wide range of colors and patterns in textiles, allowing creative minds to play with infinite combinations.

VIVA is a bench with its own identity that transforms spaces, paying homage to fun and creativity, seeking to surprise and excite the public alongside the other pieces from HOUTIQUE.





## CAROLINA MICÓ

Carolina Micó specializes in creative direction and multidisciplinary design, ranging from product and interior design to art direction. Based in Spain, Carolina Micó, understands creation as a tool to surprise and excite the public in projects with a colorful, acid and optimistic imprint that coexists with a fresh, dreamy and feminine style, using retro inspiration translated into a modern language.

Extravagance, creativity and conceptual irony are Carolina's basics, aiming to have fun and tell nice stories.





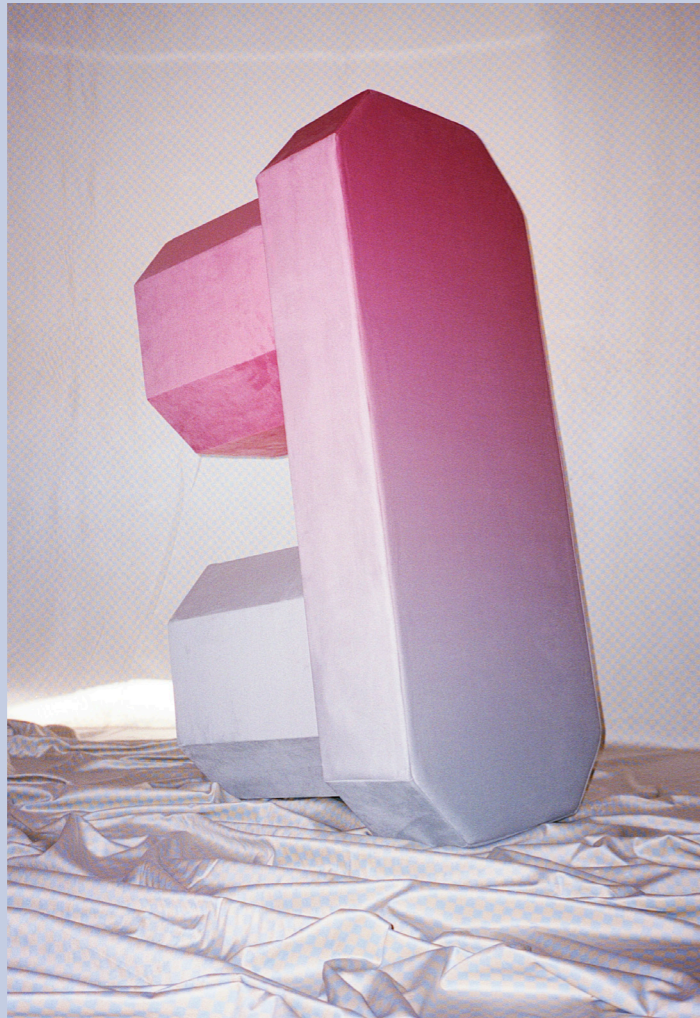
Back to the future. Sexy, Lux & Fun.  
HOUTIQUE is a Spanish home and deco  
brand based on colours and with a heavy  
artistic spirit. An iconic international  
brand, unexpected, cheeky and daring  
singular, provoking emotions in our  
community and fans, aiming to become  
a love brand and an inspiring brand for  
interior designers and professionals.













# HOUTIQUE.



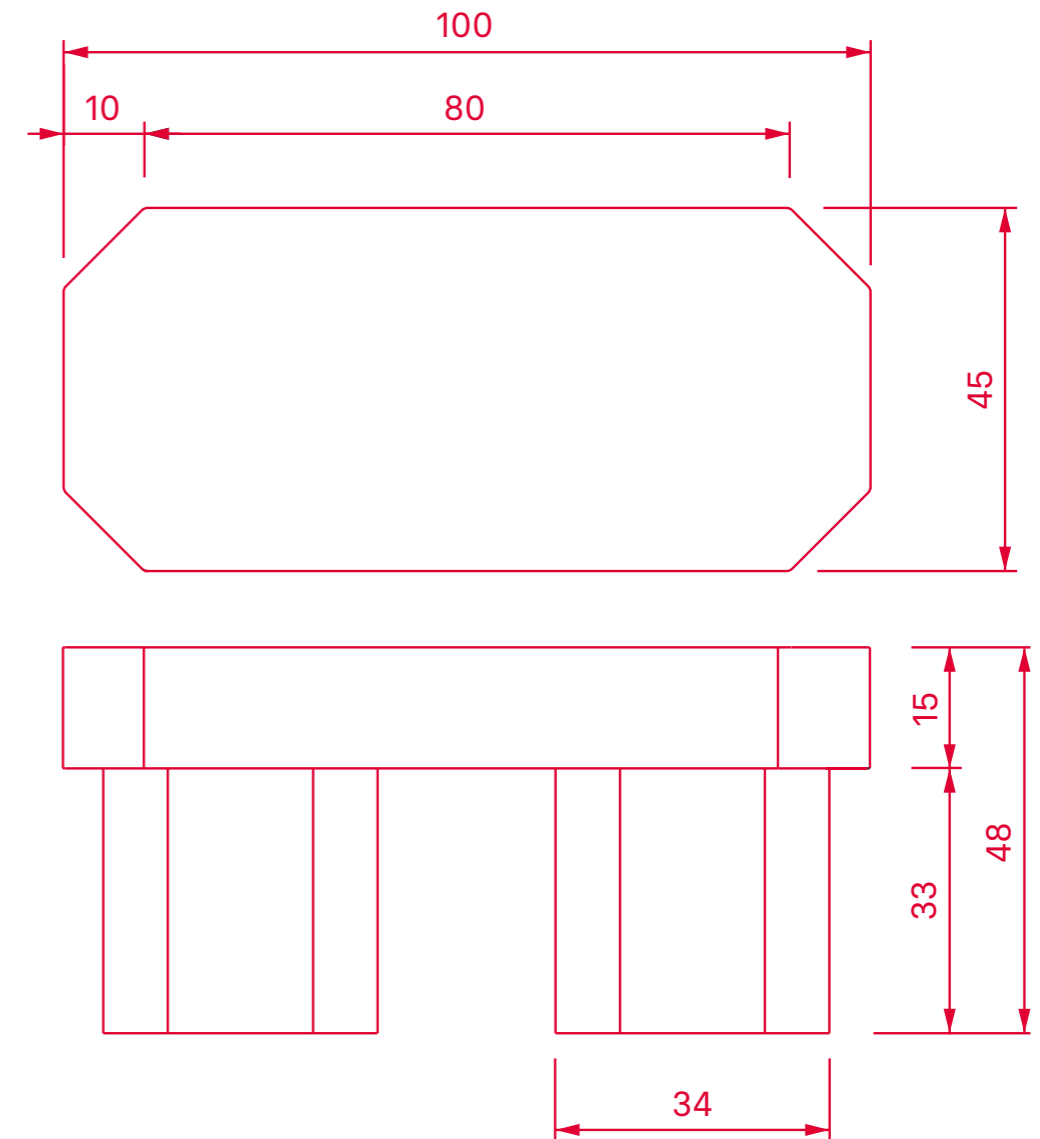
# HOUTIQUE.

## TECHNICAL INDEX

Upholstered bench in flame-retardant velvet, with a wooden frame and high-density foam (35 kg super soft hazelnut).

For indoor use only.  
Designed by Carolina Micó.  
Made in Spain.

H. 48cm x W. 100cm x D. 45cm  
W. 15kg







HOUTIQUE.  
**2023**